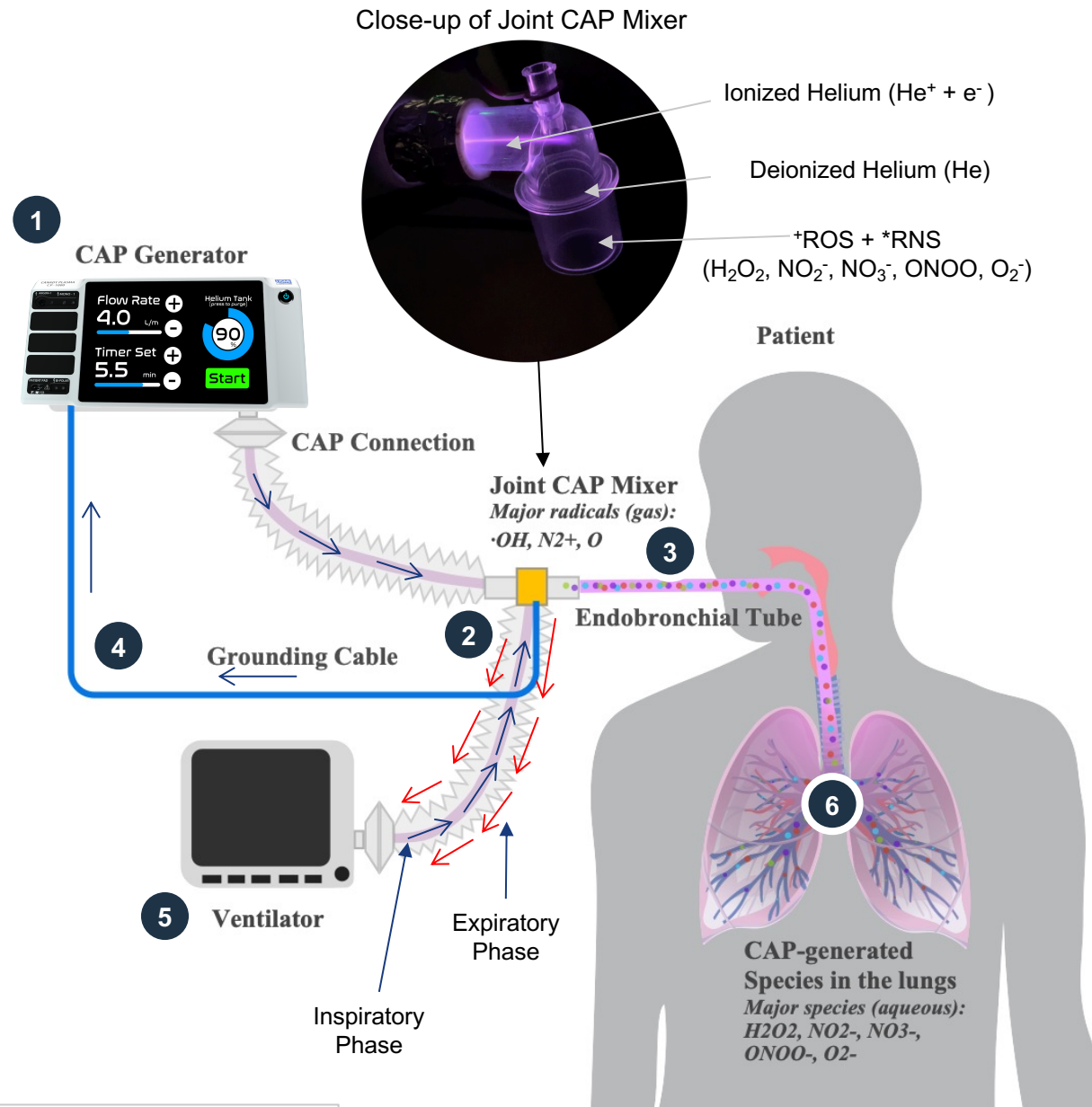


# Canady Helios Cold Plasma HERO Procedure Overview



1 The Canady Helios Cold Plasma Electrosurgical Generator (CHCP) provides a high voltage, low frequency alternating current (AC) wave and helium gas to the Canady Helios Cold Plasma HERO System. The surgeon/staff can also manually adjust treatment duration, voltage level, and gas flow rate flowing from the generator.

2 The Canady Helios Cold Plasma HERO System CAP Mixer produces helium gas ionization and helium plasma which is blended with humidified  $\text{O}_2$  and air in the junction from the ventilator tube.

3 The mixture of plasma species with Air and Oxygen can now be introduced into the patient's breathing circuit through Endobronchial Tube.

4 Return current flows back to the generator along the grounding cable to complete the electric circuit

5 The ventilator breathing circuit provides the patient's predetermined  $\text{O}_2$ /room-air blend. This blend meets and mixes with the ROS-rich Helium gas in the "T" connector before entering the patient's intubation tube.

6 It is believed the introduction of the ROS by-products of helium based cold plasma into the respiratory system will allow these species to induce oxidative reactions that inactivate the virus.

\*ROS – Reactive Oxygen Species  
\*RNS – Reactive Nitrogen Species